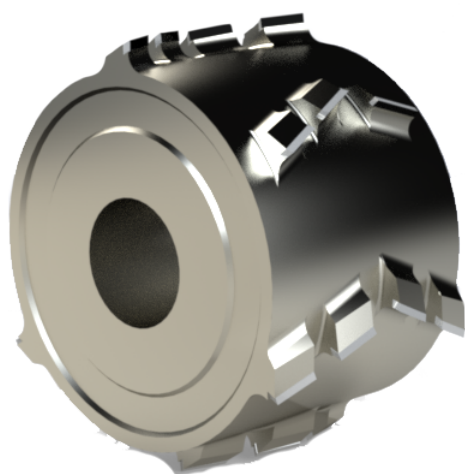
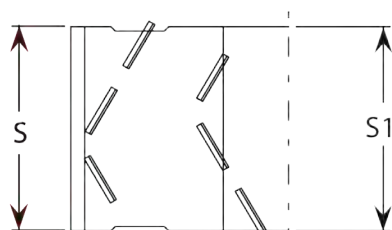


## Fresa simmetrica a finire per macchine bordatrici

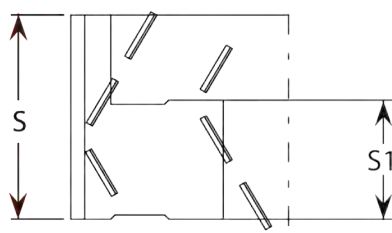
*Jointing cutter symmetric for edge-banding machines*



mod. A

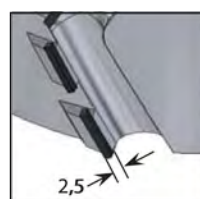


mod.C



## 3 PRINCIPI DI TAGLIO

ØD	S	Z	Foro	Codice
80	68	27	30+2CH	<b>AS32.080.68.25</b>
125	38	15	30+2CH	<b>AS32.125.68.25</b>
125	46	18	30+2CH	<b>AS32.125.46.25</b>
125	53	21	30+2CH	<b>AS32.125.53.25</b>
125	61	24	30+2CH	<b>AS32.125.61.25</b>
125	68	27	30+2CH	<b>AS32.125.68.25</b>



## 3 PRINCIPI DI TAGLIO

ØD	S	Z	Foro	Codice
80	68	27	30+2CH	<b>AS32.080.68.04</b>
125	38	15	30+2CH	<b>AS32.125.68.04</b>
125	46	18	30+2CH	<b>AS32.125.46.04</b>
125	53	21	30+2CH	<b>AS32.125.53.04</b>
125	61	24	30+2CH	<b>AS32.125.61.04</b>
125	68	27	30+2CH	<b>AS32.125.68.04</b>

**Caratteristiche**

Fresa per spianare a spessore costante per macchine bordatrici.

**Characteristics**

Cutterhead with constant thickness for edge-banding machines. .